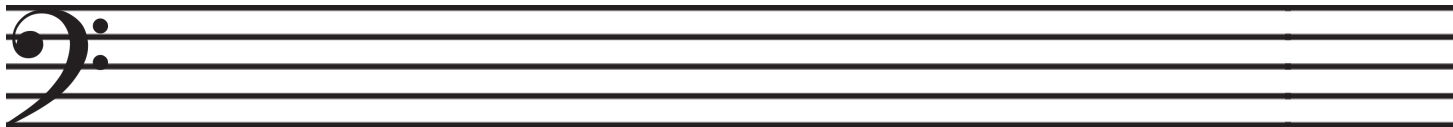


Note Names in Bass Clef Name: _____

1. This is a bass clef. Practice drawing it five times.



The names of the lines in bass clef: **G**reat **B**ig **D**ogs **F**ight **A**nimals (GBDFA)

The names of the spaces in bass clef: **A**ll **C**ows **E**at **G**rass (ACEG)

2. Label the lines and spaces in bass clef (copy what is in the example).

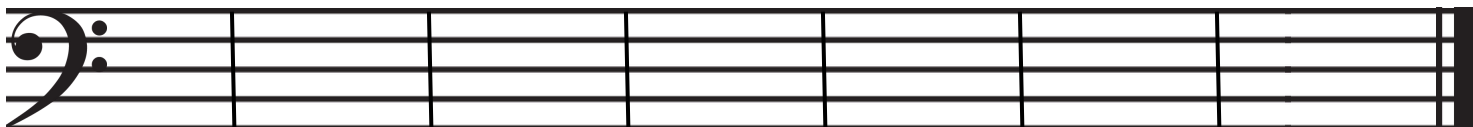


Label the names of the given notes.



3. _____ 4. _____ 5. _____ 6. _____ 7. _____ 8. _____

Draw the given notes **as a whole note**. If there are multiple places you could draw the note, choose one.



9. A 10. B 11. C 12. D 13. E 14. F 15. G

Notice that when you draw notes in alphabetical order they alternate line/space/line/space/etc. This is also what happens when you combine GBDFA and ACEG.....G/A/B/C/D/E/F/G/A

Stem Direction

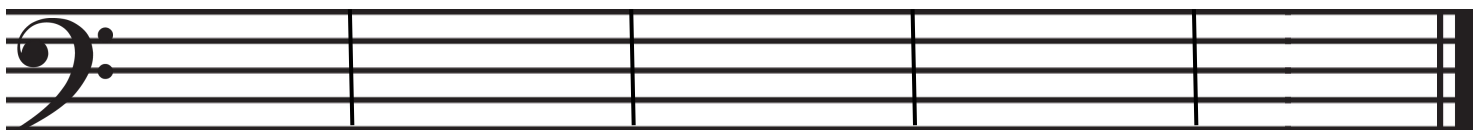


If a note with a stem is on the second space or lower, the stem is on the right side going up.

If a note with a stem is on the fourth space or higher, the stem is on the left side going down.

If a note with a stem is on the middle line, you choose the stem direction.

Practice drawing the following notes as **half notes**, paying attention to stem direction.



16. B 17. D 18. G 19. A 20. F