

ENHARMONIC TONES REVIEW Name: _____

Enharmonic tones are two notes that sound the same but look different (share a piano key, but have different names)

X. DOUBLE SHARP; RAISES A ♯ BY A W STEP; RAISES A ♯ BY A H STEP.

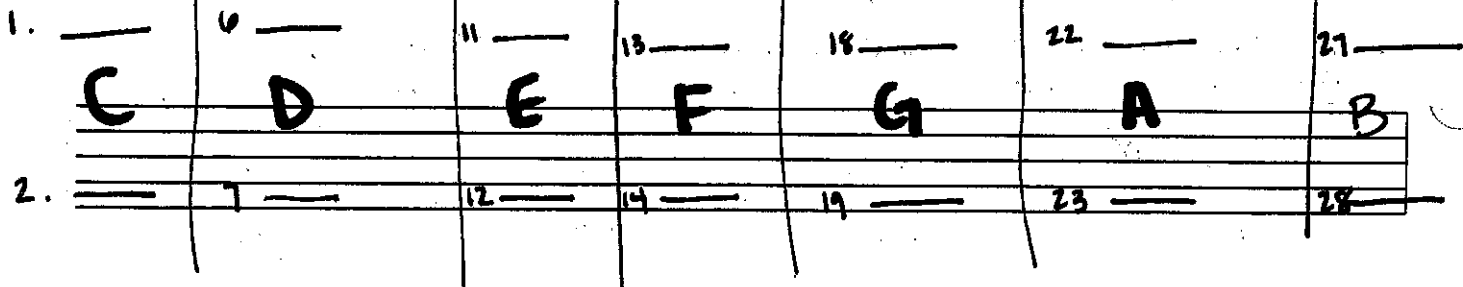
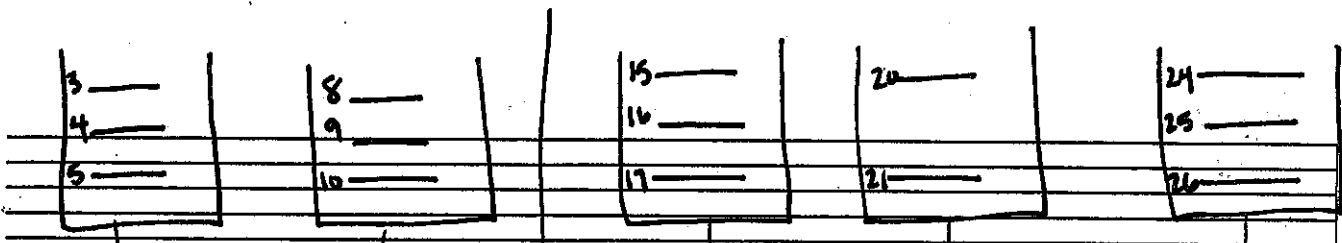
SHARP; RAISES A ♯ BY A H STEP

♮ NATURAL; RAISES A ♭ AND LOWERS A # BY A H STEP.

♭ FLAT; LOWERS A ♯ BY A H STEP

♭♭ DOUBLE FLAT; LOWERS A ♯ BY A W STEP; LOWERS A ♭ BY A H STEP.

Fill in the keyboard below with ♭♭, ♭, #, and X.



29. Which intervals are perfect? — — — —

30. Which intervals are major? — — — —

NOTES:

Moderato - Moderately

Ritardando - Gradually get slower

Ritardando - Gradually get slower